



Indonesia Trade
Promotion Center



FISH & CHICKEN

CATALOGUE PRODUCT

CV. BHUMIAGRI NAWASENA PERKASA



Bhumiagri Nawasena Perkasa
GOODS OF INDONESIA

TABLE OF
CONTENTS

Skipjack Tuna (Cakalang)	01.	Milk Fish	16.
Tuna	02.	Yellow Fin Tuna Loin Co	17.
Ballyhoo Halfbeak (Roa)	03.	Tuna Saku	18.
Milkfish (Bandeng)	04.	Loin Co Center Cut	19.
Gindara	05.	Tuna Loin Natural	20.
Mackerel (Ikan Kembung)	06.	Tuna Loin Natural Center Cut	20.
Mackerel (Ikan Layang)	07.	Carcass Chicken	21.
Cakalang & Gindara	08.	Chicken Storing Activity	22.
Babay Tuna	09.		
Fish Storing Activity	10.		
Layang Jumbo	11.		
Kembung Banjar	12.		
King Fish	14.		
King Fish Steak (Vacuum)	15.		



SKIPJACK TUNA (CAKALANG)

Katsuwonus pelamis

Weight	< 0.3kg - > 1kg
Contain	Skipjack Tuna (Cakalang)
Type	Frozen
Packaging	-
Quality Control	Passed

100% INDONESIAN FISH

We serve retail sale, wholesale for catering, horeca (hotel, restaurant & cafe) and export.
Does not contain dyes and preservatives

SKIP JACK TUNA (*Katsuwonus pelamis*) is a medium-sized fish from the Scombridae (tuna) family. The only species of the genus *Katsuwonus*. The largest skipjack tuna, its body length can reach 1 m and weigh more than 18 kg. The skipjack tuna that is caught is about 50 cm long. Other names include cakalang, cakang, kausa, kambojo, karamajo, turing, and some call it cob. In English it is known as skipjack tuna



TUNA
Thunnini

Weight	< 0.3kg - > 1kg
Contain	Tuna
Type	Frozen
Packaging	-
Quality Control	Passed

100% INDONESIAN FISH

We serve retail sale, wholesale for catering, horeca (hotel, restaurant & cafe) and export.
Does not contain dyes and preservatives

TUNA ,is a marine fish belonging to the Thunnini nation, consisting of several species from the skombride family, especially the genus Thunnus. This fish is a reliable swimmer (once measured reaching 77 km / h). Unlike most fish, which have white flesh, tuna flesh is pink to dark red. This is because tuna muscle contains more myoglobin than other fish. Some of the larger tuna species, such as the Atlantic bluefin tuna (Thunnus thynnus), can raise their blood temperature above air temperature through muscle activity. This causes them to live in colder air and can survive in a variety of conditions. Mostly large-bodied, tuna are a fish with high commercial value.



BALLYHOO HALFBEAK (ROA)
Hemiramphus brasiliensis

Weight	-
Contain	Ballyhoo Halfbeak (ROA)
Type	Frozen
Packaging	-
Quality Control	Passed

100% INDONESIAN FISH

We serve retail sale, wholesale for catering, horeca (hotel, restaurant & cafe) and export.
Does not contain dyes and preservatives

BALLYHOO HALFBEAK The ballyhoo halfbeak or ballyhoo (*Hemiramphus brasiliensis*) is a baitfish of the halfbeak family (*Hemiramphidae*). It is similar to the Balao halfbeak (*H. balao*) in most features. Ballyhoo are frequently used as cut bait and for trolling purposes by saltwater sportsmen. The fish is reported to have caused ciguatera poisoning in humans.



MILKFISH (BANDENG)
Chanos chanos

Weight	-
Contain	Milkfish (Bandeng)
Type	Frozen
Packaging	-
Quality Control	Passed

100% INDONESIAN FISH

We serve retail sale, wholesale for catering, horeca (hotel, restaurant & cafe) and export.
Does not contain dyes and preservatives

MILKFISH, The species has many common names. The Hawaiian name for the fish is awa, and in Tahitian it is ava. It is called bangús in the Philippines, where it is popularly known as the national fish, although the National Commission for Culture and the Arts has stated that this is not the case as it has no basis in Philippine law. In the Nauruan language, it is referred to as ibiya. Milkfish is also called bandeng or bolu in Indonesia.



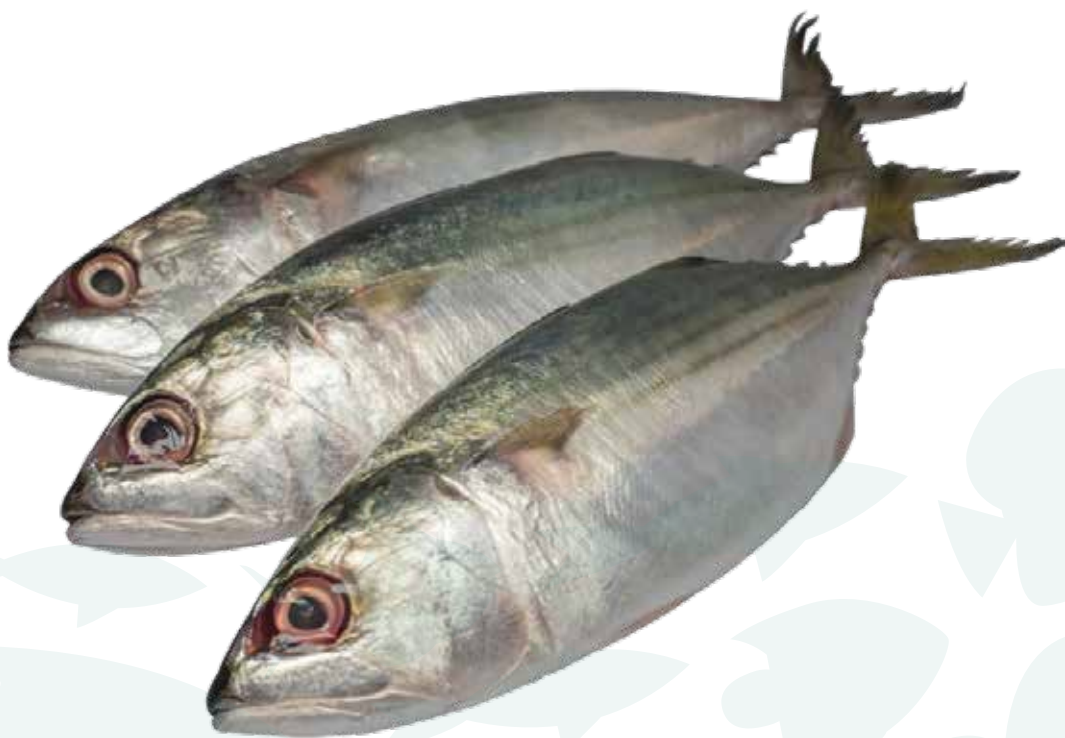
GINDARA
Lepidocybium flavobrunneum

Weight	< 3 Kg, 3-5 Kg, 6-9 Kg
Contain	Gindara (Escolar fish)
Type	Frozen
Packaging	-
Quality Control	Passed

100% INDONESIAN VEGETABLES

We serve retail sale, wholesale for catering, horeca (hotel, restaurant & cafe) and export.
Does not contain dyes and preservatives

GINDARA ,*Lepidocybium flavobrunneum*, is a species of fish in the family Gempylidae, which can be found in deep (200–885 meters (656–2,904 ft)) tropical and subtropical waters world-wide. This fish is also known as the snake mackerel, walu walu (Hawaiian: waloo). And it is sometimes sold as "butterfish" or "white tuna". This problem is exacerbated by the potential health problems associated with consumption of Gindara fish.



MACKEREL (IKAN KEMBUNG)

Rastrelliger brachysoma

Weight	-
Contain	Mackerel (Ikan Kembung)
Type	Frozen
Packaging	-
Quality Control	Passed

100% INDONESIAN VEGETABLES

We serve retail sale, wholesale for catering, horeca (hotel, restaurant & cafe) and export.
Does not contain dyes and preservatives

MACKEREL ,*Rastrelliger brachysoma* is a type of marine fish from the Scombridae tribe. Mainly spread in shallow seas in Southeast Asia and Melanesia, mackerel is a type of fish that is important for fishermen in its distribution area. In English, this fish is known as short mackerel or short-bodied mackerel.



IKAN LAYANG
Rastrelliger brachysoma

Weight	-
Contain	Mackerel (Ikan Layang)
Type	Frozen
Packaging	-
Quality Control	Passed

100% INDONESIAN VEGETABLES

We serve retail sale, wholesale for catering, horeca (hotel, restaurant & cafe) and export.
Does not contain dyes and preservatives

MACKEREL , *Rastrelliger brachysoma* is a type of marine fish from the Scombridae tribe. Mainly spread in shallow seas in Southeast Asia and Melanesia, mackerel is a type of fish that is important for fishermen in its distribution area. In English, this fish is known as short mackerel or short-bodied mackerel.

CAKALANG



GINDARA

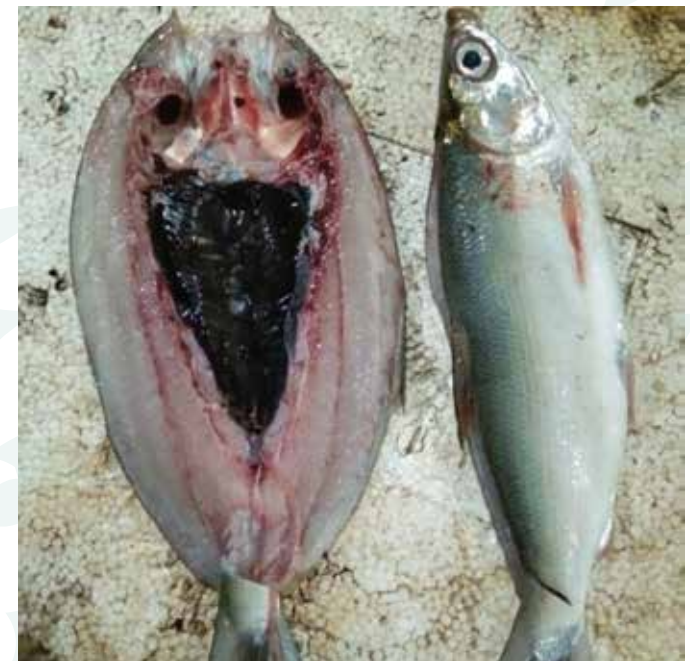
BABY TUNA



FISH STORING ACTIVITY









KING FISH



KING FISH STEAK (VACUUM)



MILK FISH



YELLOW FIN TUNA LOIN CO



TUNA SAKU



LOIN CO CENTER CUT



TUNA LOIN NATURAL



TUNA LOIN NATURAL
CENTER CUT



CARCASS CHICKEN

Weight	-
Contain	-
Type	Frozen
Packaging	-
Quality Control	Passed

100% INDONESIAN MEAT

We serve retail sale, wholesale for catering, horeca (hotel, restaurant & cafe) and export.
Does not contain dyes and preservatives

CHICKEN CARCASS ,is whole chicken meat without the head and claws that have been cleaned of feathers and innards. Carcass chicken is commonly called cut chicken because its shape varies from whole to pieces that have been cut into pieces. In general, this chicken is often traded in the market to be processed for people's daily food. Even though the body has been shaved, fine hairs can still be found on its body so we still need to be extra careful in cleaning or washing the chicken meat.

CHICKER STORING ACTIVITY











Bhumiagri Nawasena Perkasa
GOODS OF INDONESIA

ADDRESS :

One Pacific Place, Lantai 15
Sudirman Central Business District
Jalan Jendral Sudirman, Kavling 52-53
Jakarta Selatan, Indonesia (Kode Pos 12190)

CONTACT US :

Contact Person : RULLY PRAKASHA
WhatsApp : (+62) 812 2030 4036
Phone : (+62) 856 0000 3032
Fax : (+62) 21 2550 2555
Email : info@bhumiagri.co.id

WEBSITE :

www.bhumiagri.co.id

INSTAGRAM :

[bhumiagri_official](https://www.instagram.com/bhumiagri_official)

